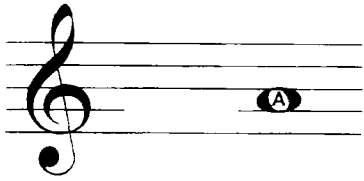
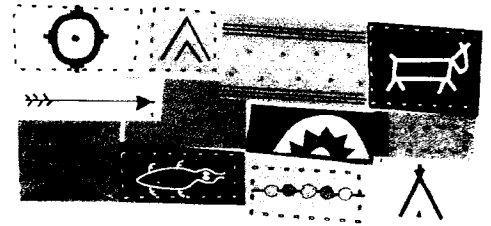


# Treble A



This A is on space 2.  
It is a step above the G line.



- Find this A on the keyboard.
- Play with R.H. fingers 2, 3, then 4.

# Young Hunter

Words by Jennifer MacLean

Moderately  
4 on \_\_\_?

*mf* Hunt - er that is nev - er seen,  
runs a - mong the ev - er - green. *p*

5

1 on \_\_\_?

*f* Lies (2 - 3 - 4) low, (2 - 3 - 4) *p* waits for buf - fa lo.

*mf* Lives be - side the rush - ing stream. *p*

### DISCOVERY

Which lines of music are the same? Can you remember the notes?

Teacher Duet: (Student plays 1 octave higher)

R.H. *mf* *p* *mf* *p*

L.H. *mf* *p* *mf* *p*